



INSTRUCTION MANUAL

SmartFeed - Automatic Feeder



www.juwel-aquarium.com

Introduction

Thank you for choosing a JUWEL Aquarium product.

Our products represent over 50 years experience in the manufacturing of aquariums and their accessories applying most modern production techniques bringing together the JUWEL Aquarium system, which is both easy to use and simple to maintain.

Please read this instruction manual carefully and completely to make sure you have received all components before setting up the aquarium. Please observe the safety instructions and maintenance guidelines given in this manual.

This instruction manual has been carefully prepared to provide you with accurate and complete information. All efforts have been made to ensure that the information given is correct. However, we cannot accept responsibility for printing or other errors. Technical details are always approximate and are not warranted characteristics and may be subject to change without notice.



SAFETY NOTICES

- The electrical devices may only be operated indoors.
- This appliance is not intended for use by persons (including children) with reduced physical, sensory or mental capabilities, or lack of experience and knowledge, unless they have been given supervision or instruction concerning use of the appliance by a person responsible for their safety.
Children should be supervised to ensure that they do not play with the appliance.
- The device may contain small parts. Keep these out of reach of small children.
- Never throw the device into fire.
- Non-rechargeable batteries are not to be recharged.
- Rechargeable batteries are to be removed from the appliance before being charged.
- Different types of batteries or new and use batterie are not to be mixed.
- Batteries are to be inserted with the correct polarity.
- Exhausted batteries are to be removed from the appliance and safely disposed of.
- If the appliance is to be stored unused for long period, the batteries should be removed.
- The supply terminals are not to be short-circuited.

Functional description

The JUWEL SmartFeed automatic feeder (**Prod. Code: 89010**) is suitable for all JUWEL aquariums. The time and the required feed quantity can be programmed individually (up to 8 levels).

Within 24 hours, up to 3 feedings can be programmed.

Installing the JUWEL SmartFeed automatic feeder

The JUWEL SmartFeed automatic feeder is suitable for all aquariums.

The holding jacket is designed in such a manner that it includes a small cover, which closes the feed opening while the automatic feeder is not being used. Accordingly, no light enters through the cover.

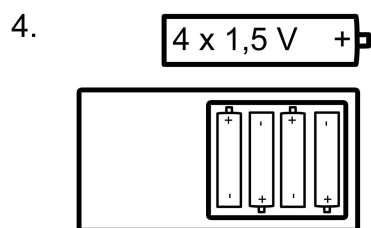
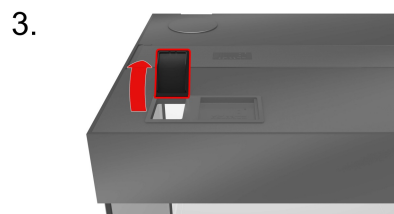
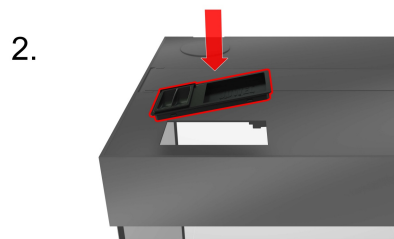
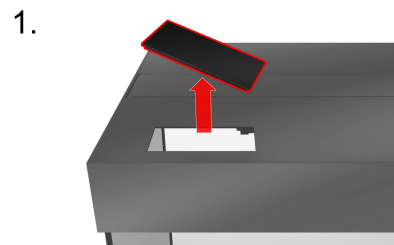
This opening is pre-cut and closed with a cover in many JUWEL aquariums.



Notice: Cover set for the JUWEL automatic feeders

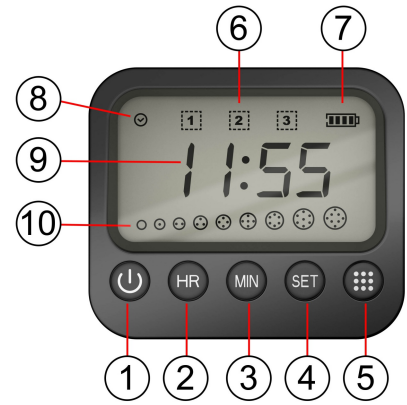
If the cover of your JUWEL aquarium does not include a special retainer for the JUWEL SmartFeed automatic feeder, we recommend that you contact your specialist retailer.

1. First, remove the lid that closes the opening for your JUWEL SmartFeed automatic feeder in the cover (if available).
2. Place the holding jacket included in the delivery into the opening.
3. Open the cap of the feed opening.
4. Insert the supplied batteries into the SmartFeed automatic feeder (4xAA).
5. Slide in the stand, as shown in the illustration.
6. Place the automatic feeder in the designated position.



Keys and display

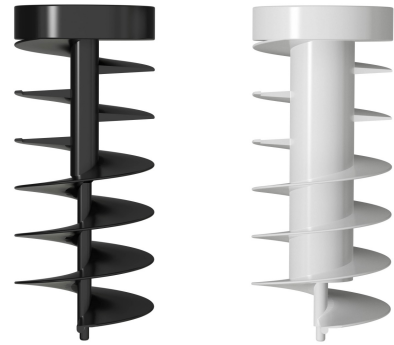
1. On/Off key
2. Hours key [HR]
3. Minutes key [MIN]
4. SET key [SET]
5. Feed quantity key (8 levels)
6. Number of feedings per day
7. Battery status
8. Symbol for system time setting
9. Time specification
10. Feed quantity display



Conveyor screw

Two conveyor screws are available for feeding.

- Black conveyor screw: For feeding flake food.
- White conveyor screw: For feeding granulated food.



Replacement of the conveyor screw

1. Remove the feed cover on the side.
2. Press the clips of the conveyor screw bracket together and remove it, as shown in the illustration.
3. Pull out the conveyor screw.
4. Insert the required conveyor screw.
5. Turn the conveyor screw until the starting position is reached.
6. Reassemble the parts in reverse order.



Commissioning the JUWEL SmartFeed automatic feeder

1. Switch on the SmartFeed automatic feeder with the On/Off key.



1.

TIPP

If the automatic feeder is switched off, no functions are active.

Feed chamber enlargement

Enlarge the feed volume with the included attachment. Please follow the instructions of the feed producer for correct dispensing.



TIPP

Please cut up flake food that is too large before filling the automatic feeder, as it may otherwise block the conveyor screw.

“Er” display message

If a mechanical problem occurs, the automatic feeder reacts (after 10 seconds) by switching itself off (“Er” display message).

Check the dosage screw for large feed quantities or foreign objects, which may be blocking it. After troubleshooting, perform a restart with the On/Off key.



Setting the time

1. Press the [SET] key for 2 seconds. The time-setting symbol appears.
2. Set the hours with the [HR] key and the minutes for the time with the [MIN] key.
3. Confirm the set time with the [Set] key.



1.



2.



3.



Battery replacement

After battery replacement, the time needs to be set again. Programmed feeding times are retained.

Programming the feeding times

Feeding 1 [1]

1. Briefly press the [SET] key and the number [1] appears for the first feeding
2. Set the hours with the [HR] key and the minutes for the required feeding time with the [MIN] key.
3. Select the required quantity with the [Feed quantity] key.
4. Confirm the settings with the [SET] key. You will automatically reach Feeding 2 and 3.

Feeding 2 [2]

Setting the second feeding: Press the [SET] key twice and the second Feeding [2] lights up. Repeats steps 2 – 4 from Feeding 1

Feeding 3 [3]

Setting the third feeding: Press the [SET] key three times and the third Feeding [3] lights up. Repeats steps 2 – 4 from Feeding 1



1.



2.



3.



4.

Note:

If you do not want any feeding, select the lowest feeding level.

Checking the settings

Press the [SET] key several times, in order to check the set feeding times and quantities.



1.



2.



3.

Manual feeding

Select the quantity for a one-off feed. You can increase the feed quantity by pressing the feed quantity key several times.

The feeding will be performed 5 seconds after selecting the required quantity.



Battery replacement

Replace the batteries, if the flashing battery symbol appears in the display. (4xAA)



Care and maintenance

The JUWEL SmartFeed automatic feeder needs hardly any maintenance or attention. Use the supplied cleaning brush for care and maintenance on a regular basis. The automatic feeder must not be cleaned under running water.

When replacing the batteries, check the contacts and clean them, if necessary.





Proper disposal (electrical waste)

The labelling on the product or on the accompanying literature declares that it must not be disposed of, at the end of its service life, together with household rubbish. Please dispose of this equipment separately from other waste, to protect the environment or public health from damage by unregulated waste disposal.

Recycle the equipment and support the sustained recycling of material resources.

Private users should contact the dealer who sold them the product or the responsible authorities, for a demonstration on how to recycle the equipment in an environmentally friendly way.

Guarantee

We guarantee the performance of the JUWEL-Aquarium product or its accessories to the purchaser for a period of 24 months from the date of purchase according to the following conditions:

§ 1 Extent of the guarantee

(1) This guarantee extends to the JUWEL-Aquarium product and its components excluding items subject to wear and tear such as light tubes and filter media. It is limited to the product as such and does not cover damage to other property and/or individuals. In addition, the provisions of the product liability law apply. These provisions are not limited by the aforementioned arrangement.

(2) It is the prerogative of JUWEL-Aquarium to decide whether the guarantee is performed by means of repair or replacement. If neither repair nor replacement can ensure the performance of the JUWEL-Aquarium product the purchaser is entitled to demand a reduction in price or to return the product against repayment of the purchase price.

§ 2 Guarantee period and settlement procedure

(1) The guarantee period begins on the day of the purchase of the product from the retailer. Claims under this guarantee will not be honoured, if

- (a) the damage is caused as a result of improper use or maintenance or nonobservance of the instructions given in this manual
- (b) the product or its components have been maintained by persons or companies not authorised by the manufacturer to do so
- (c) the product or its components have been damaged by mechanical means of whatsoever kind, in particular broken glass

(2) All claims under this guarantee have to be notified to the retailer, from whom the aquarium has been purchased without delay, however, not longer than 2 weeks from the day of first occurrence of defects. Rights under the consumer protection laws will remain unaffected.

(3) Guarantee claims will only be accepted if the validity of the claim is supported by evidence of purchase of the JUWEL-Aquarium product. This declaration of guarantee is a translation only. In case of doubts the original

German language version prevails.

We reserve the right to make technical alterations.

© JUWEL AQUARIUM

* JUWEL, Trigon, Vision, Rekord, Rio, Lido, Vio, Primo, Korall, MonoLux, DuoLux, MultiLux, KorallLux, Violux, NovoLux, PrimoLux, SeaSkim, AquaHeat, EasyFeed, High-Lite, Warm-Lite, Colour-Lite, Day-Lite, Juwel Twin-Lite, HiFlex, Juwel Ecoflow, Bioflow, Cirax, Nitrox, Phorax, Carbox, BioPad, BioCarb, BioPlus, OxyPlus, Silexo, Conexo.

AquaHeat 50W, AquaHeat 100W, AquaHeat 200W, AquaHeat 300W 220-240V, 50Hz

JUWEL AQUARIUM AG & CO. KG

Karl-Göx-Straße 1 27356 Rotenburg/Wümme . GERMANY

Telefon +49(0)42 61/93 79-32

Telefax +49(0)42 61/93 79-856

Service-Mail service@juwel-aquarium.de

JUWEL AQUARIUM UK Branch

Gateway 11 Business Park

Penfold Drive, Wymondham Norfolk NR18 0WZ

Tel.: 01953 606 363 Fax: 01953 603 839

E-Mail: info@juwel-aquarium.co.uk

Service-Mail: info@juwel-aquarium.co.uk

www.juwel-aquarium.com

